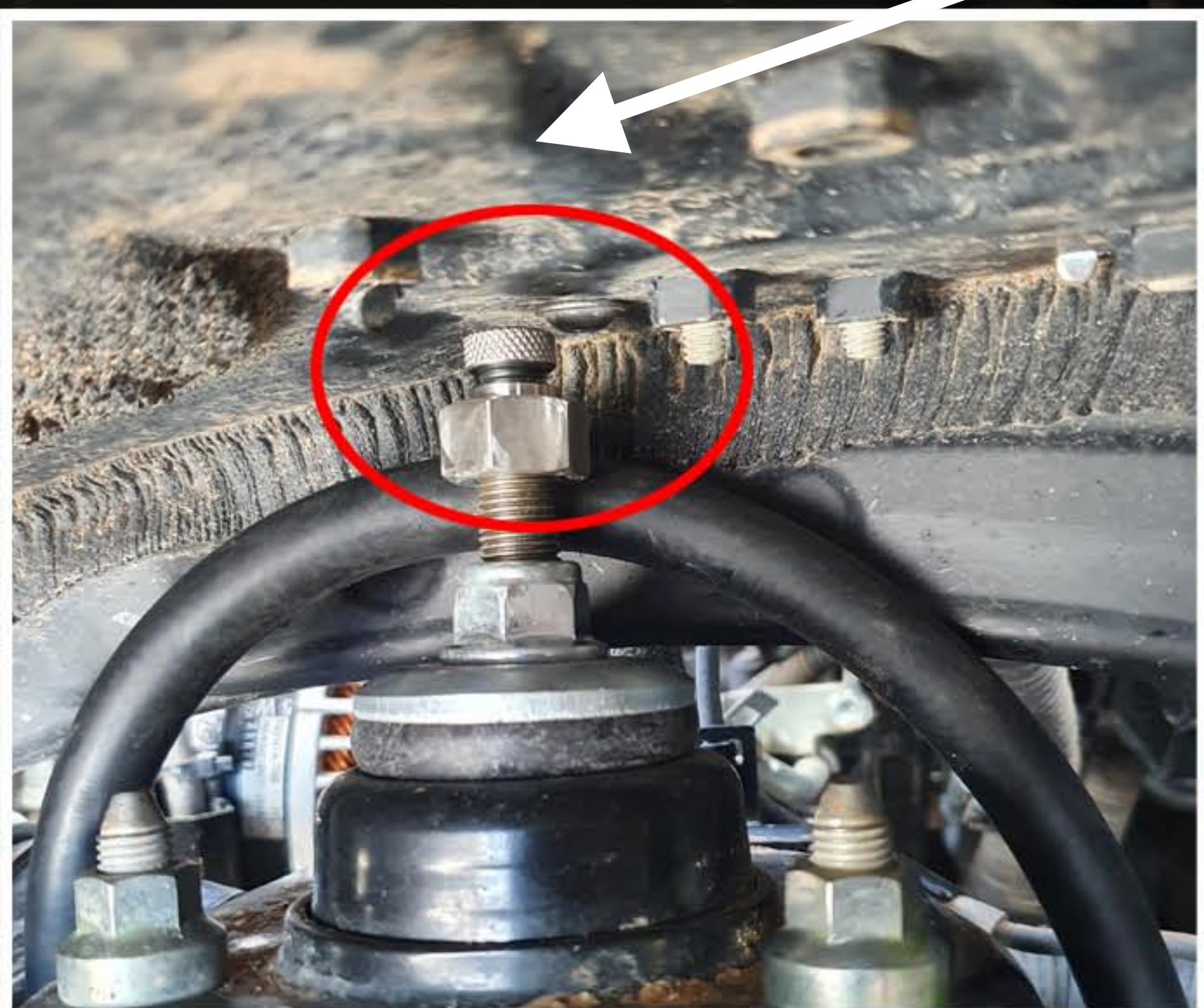


TOYOTA PRADO 150 4 RUNNER/ FJ CRUISER WITH KDSS LEFT SIDE

P CLAMP

SOME VEHICLES MAY REQUIRE THE FORWARD NUT & BOLT ON THE INNER GUARD TO BE REMOVED WITH A HAMMER AND CHISEL AND THE 6MM DOME HEAD BOLT SUPPLIED INSTALLED FROM THE BOTTOM WITH THE NUT AND WASHER ON THE TOP, AND THE GUARD TAPPED LIGHTLY WITH A HAMMER TO PROVIDE CLEARANCE TO THE REBOUND ADJUSTER



POSITION RESERVOIR TO CLEAR HOSES AND BRACKETS, DRILL AND TAP / BOLT USING HANDLE NUTS IN POSITION AS REQUIRED. SHOWN WITH RUBBER LINER REMOVED - THIS LINER CAN HAVE A SLOT / V CUT INTO IT FOR ACCESS TO ADJUSTERS

TOYOTA PRADO 150 4RUNNER/ FJ CRUISER

P-CLAMP

NOTE BRACKET ORIENTATION.
ENSURE CLEARANCE OF RESERVOIR
TO RADIATOR/INTERCOOLER HOSES.
***SEE BOTTOM LEFT PICTURE FOR
LEFT SIDE IMPORTANT NOTES***
RE-FIT RUBBER LINER AND STRETCH
HOLES OVER BOLT HEADS AT THE
BOTTOM FOR ACCESS TO ADJUSTERS

SOME VEHICLES MAY REQUIRE THE
FORWARD NUT & BOLT ON THE
INNER GUARD TO BE REMOVED
WITH A HAMMER AND CHISEL AND
THE 6MM DOME HEAD BOLT
SUPPLIED INSTALLED FROM THE
BOTTOM WITH THE NUT AND
WASHER ON THE TOP, AND THE
GUARD TAPPED LIGHTLY WITH A
HAMMER TO PROVIDE CLEARANCE
TO THE REBOUND ADJUSTER

ROUTE HOSE TO THE REAR. FIX
HOSE WITH P - CLAMP.
DRILL 6MM HOLE AND POSITION
CLAMP SO HOSE IS AGAINST
THE OUTER FOLD EDGE OF THE
COIL TOWER AND SO HOSE IS
ALMOST TIGHT AT FULL DROOP.

CHECK CLEARANCE TO BRAKE
LINE AND BEND AWAY BRAKE
BRACKET SLIGHTLY IF REQUIRED

FOR THE LEFT SIDE OF SOME DIESEL
MODELS THERE IS A CHASSIS EARTH
THAT MAY CONTACT THE BRACKET.
IN THIS CASE BEND THE BRACKET OUT
SLIGHTLY ABOVE THE 2 X 6MM BOLTS
A FEW DEGREES IN A VICE TO ALLOW
CLEARANCE

SHORT 8MM
CAPTIVE NUT
AND LONGER
8MM BOLTS &
S/WASHERS

SHORT 8MM
BOLTS & SPRING
WASHERS

LONGER 6MM
CAPTIVE NUT
AND LONGER 6MM
BOLT & SPRING
WASHER

