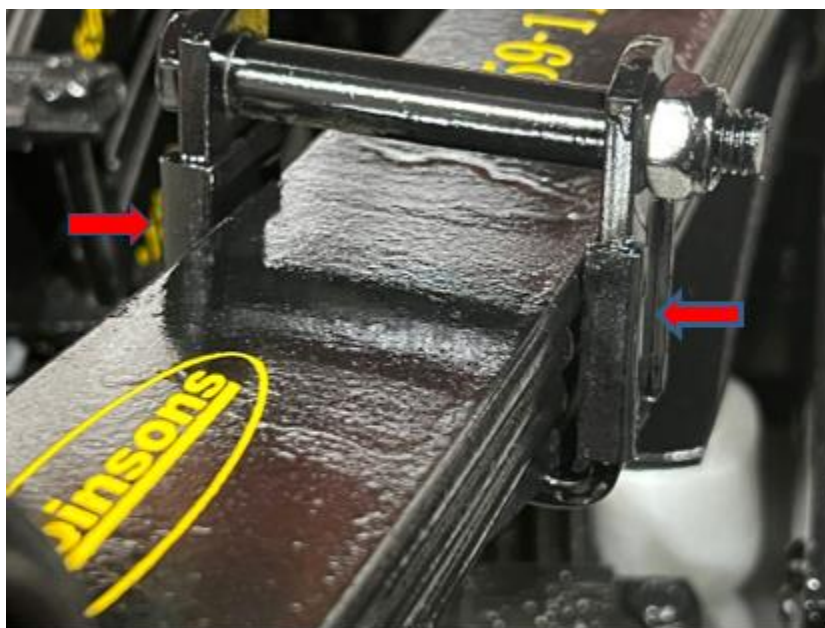




Technical Bulletin

Part numbers: L59-110-R, L59-111-R, L59-112-R and L59-113-R

The above-mentioned leaf packs are equipped with rebound clip liners to keep the leaves properly arranged/centered.



Picture 1

The liners can be found in all the rebound clips on such leaf packs (see picture 1). If one or more of these rebound clips is missing or damaged, the leaves can become out of alignment. In the event of this happening, the 2nd leaf on the pack can contact the shackle. To mitigate this rubbing contact, one must replace the liner and re-centralize the leaves.

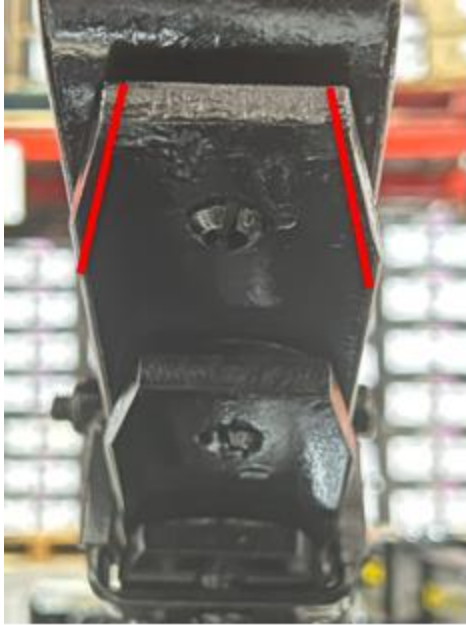
Here is an example of a leaf spring missing the liner and the effect that it has over the leaf pack



Picture 2

Picture 2 shows the second leave out of alignment due to the missing rebound clip liner. To correct this, the 2nd leave must be moved back into alignment by tapping it with a hammer (a piece of wood or a non-marring hammer can be used to prevent damaging the finish). Once the rest of the leaves are centered by following the same procedure, the rebound clip liners can be installed. To do so, remove the top bolt, nut, and sleeve on the rebound clip and reinstall the liner. After the liner is secured in place between the leaf pack and the rebound clip, reinstall the bolt, nut, and sleeve in the reverse order that they were removed.

If you require even more clearance, another option is to grind a bigger notch on the diamond cut of the leaf (see picture 2).



Picture 3

Other reasons that can cause the leaf spring pack to come misaligned:

- Improperly torqued (loose) U-bolts
- Loose center pin/bolt

A bolt check is recommended during the first 500 miles and followed up every 5000 miles.

10311 NW 62nd Str – Doral, Florida 33178
USA – Ph: 305-424-8353
www.Dobinsonsdirect.com

