

DD59-644K Diff Drop Fitting Guide



This Diff Drop Kit will take approximately 0.5 hours to install

***Dobinsons products should be installed by a qualified installer, and it is the installers responsibility to ensure correct fitment.
Dobinsons is not responsible for any damage incurred to the vehicle during installation.***

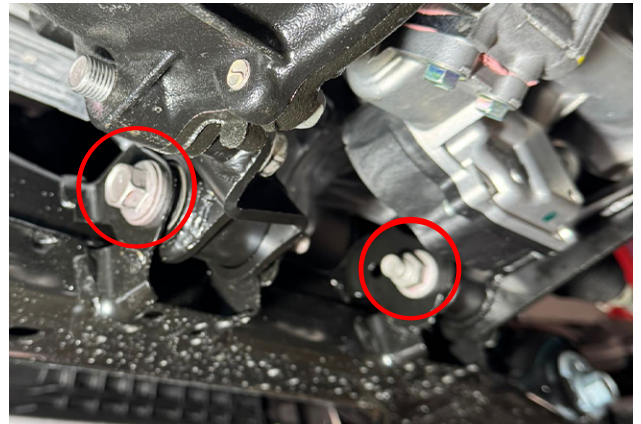
Park the vehicle on a flat surface, engage the parking brake, and chock the rear tires.

Position a floor jack at the manufacturer's designated lift point on the frame and raise the front of the truck. Place a jack stand securely under the frame and lower the truck onto the stand.

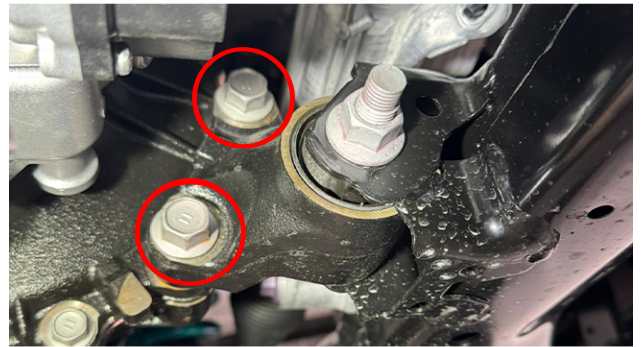
Never work under an unsupported vehicle.

Support the front differential with a floor jack.

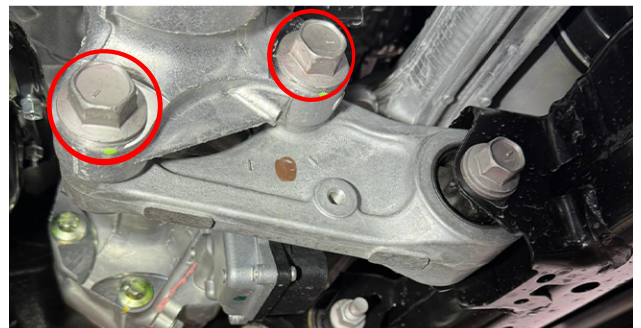
Using a 19mm socket, remove the 12mm bolts and nuts securing the differential mounts to the frame.



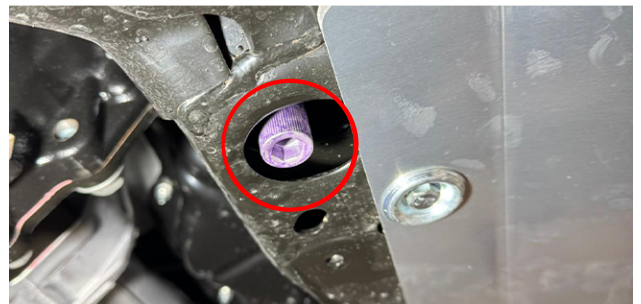
On the driver side, remove the two 12mm bolts securing the differential mount to the differential using a 19mm socket. **Retain these bolts for reuse.**



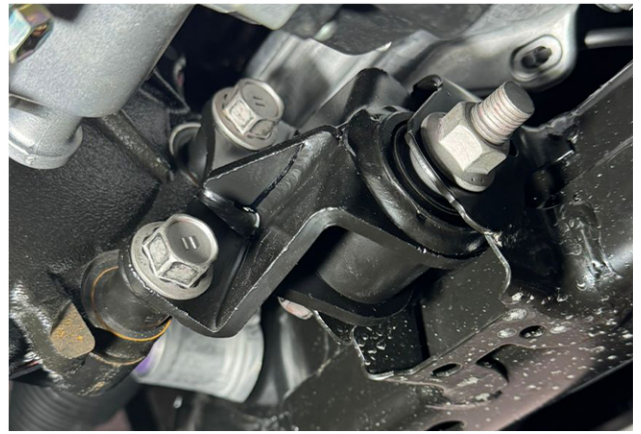
On the passenger side, remove the two 16mm bolts securing the differential mount to the differential using a 22mm socket. **Retain these bolts for reuse.**



Using a 12mm hex key, loosen the rear differential mount.



Install the new driver-side mount first, reusing the OEM bolt and nut for both the frame side and the differential side. Do not fully tighten at this stage.



Install the passenger-side mount, reusing the OEM hardware and the two supplied M16 nuts.



Once all hardware is in place, torque as follows:

- M12 bolt and nut: 70 ft-lbs
- Passenger-side M16 bolts and nuts: 150 ft-lbs
- Rear diff mount (12mm hex key): 74 ft-lbs

After installation, check the differential fluid level and top off as needed to compensate for any change in differential angle.

Note: Recheck and re-torque all hardware after the first 500 miles of driving.